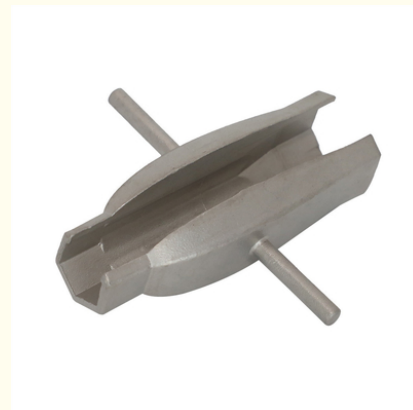


## Model Casting Metal Parts Of Investment Casting With Carbon Steel

Our Product Introduction

### Basic Information

- Place of Origin: China
- Certification: ISO9001:2015
- Minimum Order Quantity: 500pcs
- Price: negotiable
- Packaging Details: Carton and wooden case
- Delivery Time: 35-45 days
- Payment Terms: T/T, Paypal
- Supply Ability: 100000pcs



### Product Specification

- Material: Carbon Steel
- Surface Finish: Non
- Tolerance: +/-0.1mm
- Manufacturing Process: Casting
- Weight: 500g
- Certification: ISO9001:2015
- OEM: Available
- Highlight: **casting parts, casting model parts, casting metal parts**

for more products please visit us on [caindustrialparts.com](http://caindustrialparts.com)

## Product Description

### Customization Machining Part of Investment Casting With Carbon Steel

Name	Customization Machining Part of Investment Casting With Carbon Steel
Material	Carbon Steel
Surface treatment	Non
Tolerance	+/-0.1mm
Weight	500g
Process	Casting
Certificate	ISO9001:2015
OEM	Available

#### Description:

Investment casting employs a shell made of ceramic, plaster, or plastic that is formed around a wax pattern. The wax pattern is melted and removed in a furnace and metal is poured into the shell to create the casting.

#### Advantage:

- 1.High dimensional accuracy
- 2.Extremely intricate parts are castable
- 3.Almost any metal can be cast
- 4.No flash or parting lines
- 5.Effective utilization of metal
- 6.Fewer environmental hazards from the foundry process

#### Application:

aerospace,medical,jewelry,airline, automotive and golf clubs especially since the start of 3D printing technology.

#### Company Profile:

C&A Industrial Component Ltd. Is a China based manufacturer of custom made metal components, hardware, fittings, valves, PVC products, etc.

We have over 20 manufacturing facilities that we collaborate with in China. Manufacturing process: pressure die casting, machining, stamping and etc.

Most of the facilities are Certified with ISO9001, TS16949, and etc.

Our manufacturing facilities are located in Zhejiang area and Jiangsu area with a USA sales office for our North American Customers.



**C&A Industrial Component Ltd**



86-25-58829506



[spencer@caindustrialparts.com](mailto:spencer@caindustrialparts.com)



[caindustrialparts.com](http://caindustrialparts.com)

FLAT/RM A 20/F, KIU FU COMMERCIAL BLDG, 300 LOCKHART ROAD, WAN CHAI, HONG KONG