

OEM Factory Copper Casting Small Metal Parts Brass Casting Components Automotive

Our Product Introduction

Basic Information

- Place of Origin: China
- Certification: ISO9001:2015
- Minimum Order Quantity: 500pcs
- Price: negotiable
- Packaging Details: Carton and wooden case
- Delivery Time: 35-45 days
- Payment Terms: T/T, Paypal
- Supply Ability: 100000pcs



Product Specification

- Material: Brass
- Surface Finish: Non
- Tolerance: +/-0.2mm
- Manufacturing Process: Casting
- Weight: 100g
- Certification: ISO9001:2015
- OEM: Available
- Highlight: **die casting automotive parts, copper casting parts, casting small metal parts**

for more products please visit us on caindustrialparts.com

Product Description

OEM Small Size Brass Casting Components

Name	OEM Small Size Brass Casting Components
Material	Brass
Surface treatment	Non
Tolerance	+/-0.2mm
Weight	150g
Process	Casting
Certificate	ISO9001:2015
OEM	Available

Description:

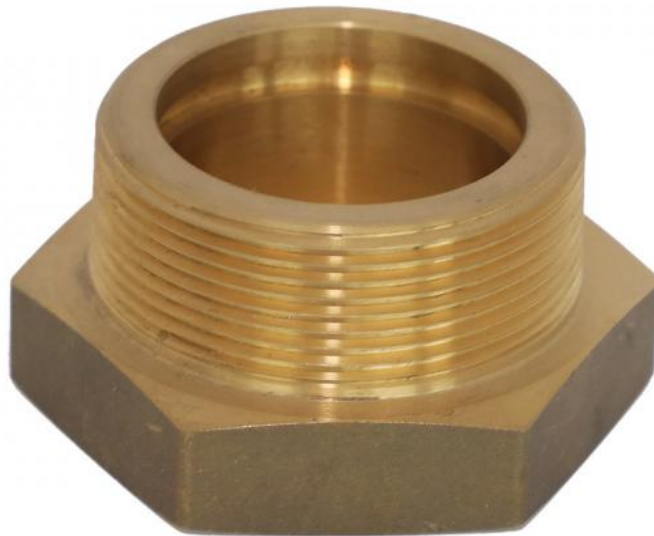
The modern casting process uses many different techniques and in all of them, liquid material is poured (or injected) into a hollow cavity of a desired geometrical shape and allowed to cool down to form a solidified part. The solidified part after it is extracted from the mold is known as a casting blank.

Advantage:

- 1.Features like internal cavities or hollow sections can be achieved.
- 2.Large components can be produced in one-piece cast.
- 3.Casting is generally less expensive than other manufacturing processes.
- 4.Casting foundries often utilize recycled material thereby reducing waste material that might otherwise end up in landfills

Application:

aerospace,medical,jewelry,ariline, automotive and golf clubs especially since the start of 3D printing technology.



Company Profile:

C&A Industrial Component Ltd. Is a China based manufacturer of custom made metal components, hardware, fittings, valves, PVC products, etc.

We have over 20 manufacturing facilities that we collaborate with in China. Manufacturing process: pressure die casting, machining, stamping and etc.

Most of the facilities are Certified with ISO9001, TS16949, and etc.

Our manufacturing facilities are located in Zhejiang area and Jiangsu area with a USA sales office for our North American Customers.



C&A Industrial Component Ltd



86-25-58829506



spencer@caindustrialparts.com



caindustrialparts.com

FLAT/RM A 20/F, KIU FU COMMERCIAL BLDG, 300 LOCKHART ROAD, WAN CHAI, HONG KONG